

FIBRE PATCH CORD



Features

They comprise two tight buffer fibres housed within a common outer jacket in OM1, OM2, OM3 multi-mode and single mode variants, both ends are terminated with a high-performance hybrid or single type connector comprising of a SC, ST, FC, LC, MTRJ, E2000 connector in simplex and duplex. These are typically not ruggedized, depending on the application and a spring-loaded electrical contact housed within LSHF plastic shell possible, making them suitable for internal use.

Compliance

ANSI / TIA-568-C.3,

ISO / IEC 11801 2nd Ed.

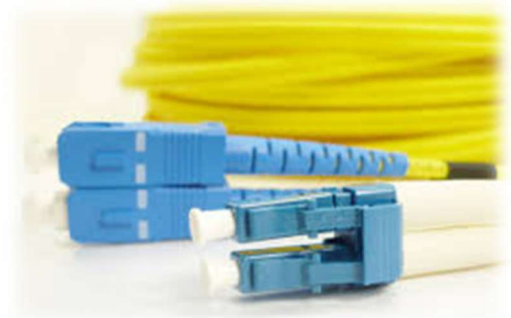
2.0mm Narrow Key Connectors on Both Ends

Can be customized a variety of programs:

SC/FC/ST/LC/MT/LSH/MTRJ/MU/MPO/D4/SMA

Key Features

- ST, SC, FC, LC, MT-RJ, E2000 connectors
- Duplex and Simplex versions niorm and hybrid cord versions
- Position A/Position B markings
- 100% factory transmission tested per ANSI/TIA-568-C.3
- Slim-profile boots with durable flexible cable strain relief
- Available in 0.9mm, 1.6mm, 2.0mm , 3.0mm sizes
- Low insertion loss, High return loss
- 3 ferrule end-face: PC/UPC/APC
- Cable materials meets OFNR OFNP
- GR-326-CORE, IEC 61754, YD/T 1272
- Two dust caps included



Mechanical & Environmental Characteristics

Range of Mode	Single or Multimode
Cable Type	Simplex or Duplex Zipcord
Connector Style	SC, FC, ST, LC, MTRJ, E2000
Outer Jacket	PVC or LSZH
Durability	500 cycles (0.2 dB max increase), 1000mate/demate cycles
Operating Temp.	-20 °C to +70°C/+85°C (armoured)
Storage Temp.	-40 °C to +85°C

Transmission characteristics

Fiber Type	Max Attenuation (dB/km)				Min. Overfill Launch Bandwidth (Mhz•km)		Min. Gigabit Ethernet Link Distance (m)		
	850nm	1300nm	1310nm	1550nm	850nm	1300nm	Gigabit 850nm	1300nm	10Gigabit 850nm
OM1 62.5/125µm	≤2.7	≤0.6	-	-	≥200	≥600	275	550	-
OM2 50/125µm	≤2.5	≤0.7	-	-	≥500	≥500	550	550	-
OM3 50/125µm	≤2.3	≤0.6	-	-	≥1500	≥500	1000	600	300
OS1 9/125µm	-	-	≤0.34	≤0.20	-	-	-	-	-
OS2 9/125µm	-	-	≤0.34	≤0.24	-	-	-	-	-

Optical performance data

Item	Single mode			Multimode		
	PC	UPC	APC	62.5/125	50/125	50/125 10G
Insert. Loss/connector (single fibre)	0.2dB Max. (0.15dB typ.)			0.3dB Max. (0.25dB typ.)		
Return Loss	>50dB	≥50 dB	≥60 dB	>35dB		
Insert. Loss/MTRJ Connector	0.5dB Max. (0.45dB typ.)			0.5dB Max. (0.45dB typ.)		
OM4 50/125µm Pull strength	≥98N	≥98N	≥98N	≥98N		

Ordering information

Part code: **HFPC-XY-EZPQ-W**

Outer jacket (X)	Fiber Type (Y)	Size (E)	Connector-1 (Z)	Connector-2 (P)	Mode (Q)	Patch cord (W)
ZH - LSZH P - PVC	OM1 OM2 OM3 OS1 OS2	01 - 1m 03 - 3m 05 - 5m 10 - 10m	C-SC T-ST F-FC L-LC Sh-LSH M-MTRJ E-E2000	C-SC T-ST F-FC L-LC Sh-LSH M-MTRJ E-E2000	SM - Single mode MM - Multimode	S - Simplex D - Duplex



Hepda Pte Ltd, 2024 Due to continuous improvement, all product specifications are subject to change without further notice.